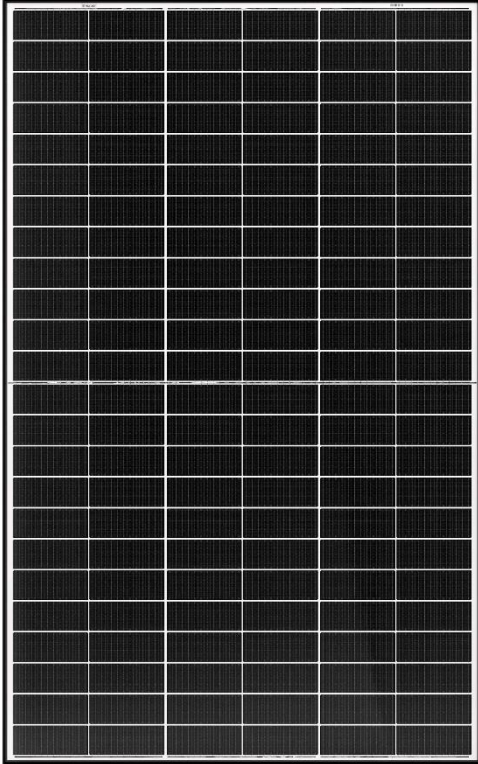


# SOLARPOWER-ON-PERC™ 425W (N30)



SOLARPOWER-ON-425W-PERC (N30)  
Black frame | Reduced dimensions



Highest efficiency solar cells

## SOLARPOWER-ON-PERC™ Series \_XUNZEL

Very high efficiency photovoltaic solar panels  
Black Frame

### Product Overview

- High-efficiency PERC solar cells.
- Ready to connect and use. Safe and easy wiring.
- Pre-assembled solar cables with connectors included.
- Expandable. Connect strings of panels in parallel, for high power systems.
- High quality, high reliability and excellent performance. PID resistance.
- Excellent wind and snow load resistance
- Corrosion-resistant junction box to protect electrical connections.
- Hardened protective glass protects the cells, which are also embedded in transparent EVA (Ethylene-Vinyl-Acetate)
- Flash and Electroluminescence testing
- Positive power tolerance (0~+3%)

**100%  
TESTED**

All our products are manufactured with the highest quality and 100% tested before delivery units



#### Multi Busbar Solar Cells

Sleek design



#### PERC Technology

Highest efficiency (23.6%)



#### PID Free

Avoids PID



#### Excellent Low-Light Performance

Designed to work at peak performance in any radiation condition



#### Severe Weather Resistant

Specially Designed to withstand the most extreme weather conditions

### Model

**SOLARPOWER-ON-425W-PERC (N30)**

© Copyright 2022 XUNZEL™ reserves the right to make changes and improvements without prior notice. Specifications are subject to change without further notification

XU-92230201MA

Industry Leading Technology for Off-Grid, Off-Shore and Backup Power Applications



# SOLARPOWER-ON-PERC™ 425W (N30)

## Technical Specifications

Model	SOLARPOWER-ON-PERC™ 425 (N30)
<b>Part Number   Code</b>	<b>SOLZTK425N30</b>
Maximum Power $P_{MPP}$	425W
Open Circuit Voltage $V_{OC}$	42.20V
Maximum Power Point Voltage $V_{MPP}$	35.26V
Short-Circuit Current $I_{SC}$	12.53A
Maximum Power Point Current $I_{MPP}$	12.05A
Power Tolerance	0 ~ + 3%
Normal Module Operating Temperature	44°C ± 2°C
Temperature Coefficient of Power	-0.34%/°C
Temperature Coefficient of $V_{OC}$	-0.25%/°C
Temperature Coefficient of $I_{SC}$	+0.04%/°C
Maximum System Voltage SCII [ $V_{DC}$ ]	1500V <sub>DC</sub>
Maximum reverse current   series fuse rating	20A   20A
Operating Temperature Range	-40°C ~ +85°C
Cells Monocrystalline PERC of very high efficiency	120x
Dimensions	1754 x 1096 x 30mm
Weight	22.0kg
Pre-assembled Solar Cables	1x 4mm <sup>2</sup> (12AWG) Positive / 1200mm 1x 4mm <sup>2</sup> (12AWG) Negative / 1200mm
Connectors (included)	Universal Type 4
Frame	Black - Anodised Aluminium Alloy
Front Glass	3.2mm High Transmission, Low Iron, Tempered Solar Glass
Junction Box	IP68
Wind and snow load resistance	2400 Pa   5400 Pa
Standards	Electrical parameters - specifications in Standard Test Conditions (STC): 1000W/m <sup>2</sup> solar irradiance, AM 1.5, 25°C cell temperature. Manufactured according to IEC61215 / IEC61730

© Copyright 2022 XUNZEL™ reserves the right to make changes and improvements without prior notice. Specifications are subject to change without further notification

XU-92230201MA

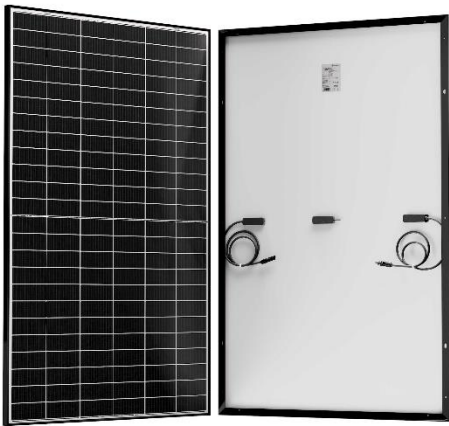
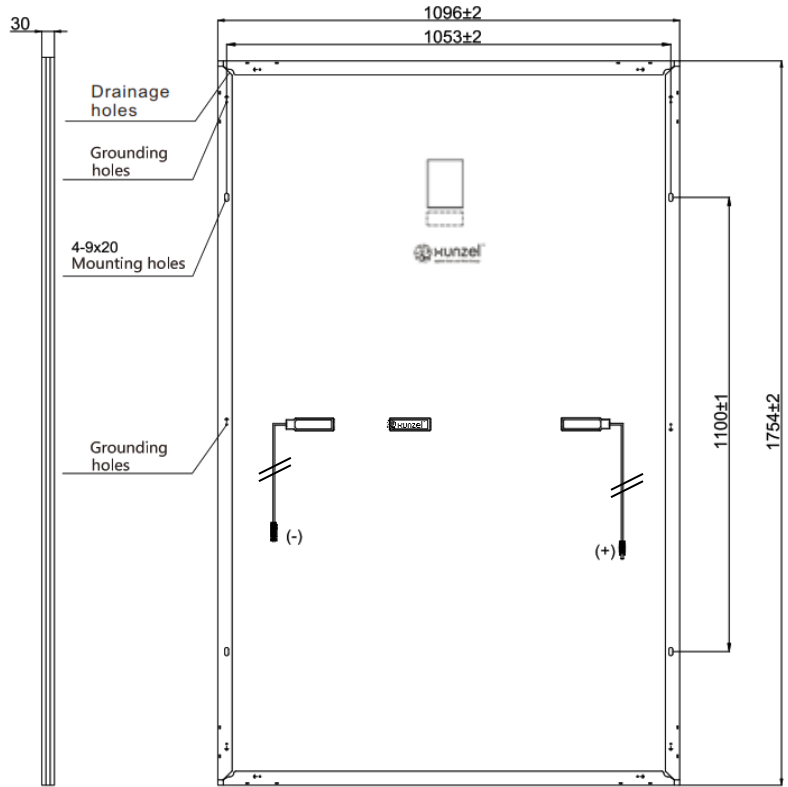
Industry Leading Technology for Off-Grid, Off-Shore and Backup Power Applications



# SOLARPOWER-ON-PERC™ 425W (N30)

## Drawings

### SOLARPOWER-ON-PERC-425 (N30)



© Copyright 2022 XUNZEL™ reserves the right to make changes and improvements without prior notice. Specifications are subject to change without further notification

XU-92230201MA

Industry Leading Technology for Off-Grid, Off-Shore and Backup Power Applications

