



xunzel™

PRODUCT  
NOTE

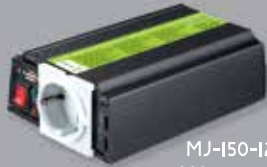
# XUNZEL-MJ Series

Modified Sinewave Power Inverters



with  
USB Charger

MJ-150-12-R



with  
USB Charger

MJ-150-12  
MJ-300-12  
MJ-300-24



MJ-500-12 / MJ-500-24



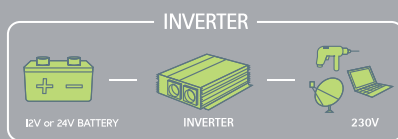
MJ-800-12 / MJ-800-24



MJ-1200-12 / MJ-1200-24



MJ-2000-12 / MJ-2000-24



## XUNZEL-MJ Series Modified Sinewave Power Inverter

### Product Overview

The **XUNZEL-MJ Series Inverters** are an ideal solution for off-grid, off-shore and backup power applications. Convert the DC battery's available power to household 220/240VAC power. Run household appliances in your boat or vehicle. Ideal for running microwave ovens, power tools, electronics items and more. Available models for 12V or 24V. They support double peak output power than nominal power in starting. Spare fuse included.

### Available Models

<b>MJ-150-12</b>	12VDC / 1 x 230VAC 50Hz / 150W + USB 5VDC
<b>MJ-150-12-R</b>	12VDC / 1 x 230VAC 50Hz / 150W + USB 5VDC
<b>MJ-300-12</b>	12VDC / 1 x 230VAC 50Hz / 300W + USB 5VDC
<b>MJ-500-12</b>	12VDC / 1 x 230VAC 50Hz / 500W
<b>MJ-800-12</b>	12VDC / 1 x 230VAC 50Hz / 800W
<b>MJ-1200-12</b>	12VDC / 2 x 230VAC 50Hz / 1200W
<b>MJ-2000-12</b>	12VDC / 2 x 230VAC 50Hz / 2000W
<b>MJ-300-24</b>	24VDC / 1 x 230VAC 50Hz / 300W + USB 5VDC
<b>MJ-500-24</b>	24VDC / 1 x 230VAC 50Hz / 500W
<b>MJ-800-24</b>	24VDC / 1 x 230VAC 50Hz / 800W
<b>MJ-1200-24</b>	24VDC / 2 x 230VAC 50Hz / 1200W
<b>MJ-2000-24</b>	24VDC / 2 x 230VAC 50Hz / 2000W

- All models delivered with battery cables

### XUNZEL-MJ Features and Benefits

- **Regulated** output
- **Low battery alarm** and shutdown to prevent total battery discharge
- **Built in LED Indicators** for safe operation
- **Protection.** With over temperature shutdown
- **Include** DC battery cables to make installation easy
- **USB port** for charging in 150W and 300W models
- **Lightweight** and anodized aluminum casing

Industry Leading Technology for Off-Grid, Off-Shore and Backup Power Applications



info@xunzel.com  
www.xunzel.com



xunzel™

PRODUCT NOTE

# XUNZEL-MJ Series

# Modified Sinewave Power Inverters

## XUNZEL-MJ Specifications



MJ-I50-I2-R



with USB Charger



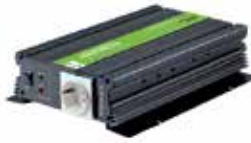
MJ-I50-I2  
MJ-300-I2  
MJ-300-24



with USB Charger



MJ-500-I2  
MJ-500-24



MJ-800-I2  
MJ-800-24



MJ-I200-I2  
MJ-I200-24



MJ-2000-I2  
MJ-2000-24

Specifications	MJ-I50-I2 MJ-I50-I2-R	MJ-300-I2 MJ-300-24	MJ-500-I2 MJ-500-24	MJ-800-I2 MJ-800-24	MJ-I200-I2 MJ-I200-24	MJ-2000-I2 MJ-2000-24
<b>Inverter</b>						
AC Output Power	150W	300W	500W	800W	1200W	2000W
AC Surge Power (Peak)	300W	600W	1000W	1600W	2400W	4000W
AC Output Voltage	230 Volts CA 50Hz	230 Volts CA 50Hz	230 Volts CA 50Hz	230 Volts CA 50Hz	230 Volts CA 50Hz	230 Volts CA 50Hz
AC Output Waveform	Modified Sinewave	Modified Sinewave	Modified Sinewave	Modified Sinewave	Modified Sinewave	Modified Sinewave
AC Output Socket (2P+TT -schuko CEE 7/4)	1 pc	1 pc	1 pc	2 pc	2 pc	2 pc
Peak efficiency	85-90%					
Nominal DC battery	12 VDC 12 VDC	12 VDC 24 VDC	12 VDC 24 VDC	12 VDC 24 VDC	12 VDC 24 VDC	12 VDC 24 VDC
Low voltage alarm	10.5 VDC ± 0.5 VDC 10.5 VDC ± 0.5 VDC	10.5 VDC ± 0.5 VDC 21 VDC ± 0.5 VDC	10.5 VDC ± 0.5 VDC 21 VDC ± 0.5 VDC	10.5 VDC ± 0.5 VDC 21 VDC ± 0.5 VDC	10.5 VDC ± 0.5 VDC 21 VDC ± 0.5 VDC	10.5 VDC ± 0.5 VDC 21 VDC ± 0.5 VDC
Low voltage shutdown	10 VDC 10 VDC	10 VDC 20 ±0.5 VDC	10 VDC 20 ±0.5 VDC	10 VDC 20 ±0.5 VDC	10 VDC 20 ±0.5 VDC	10 VDC 20 ±0.5 VDC
Thermal Protection	65°C ± 5 °C					
USB load Output	5VDC, 500mA	5VDC, 500mA	—	—	—	—
<b>Safety and Environmental</b>						
Conformance	CE EMC & LVD					
Markings	CE					
<b>Weight and dimensions</b>						
Weight	550 gr 530 gr	700 gr	1.4 Kg	2.3 Kg	3.2 Kg	5.2 Kg
Dimensions (mm)	150 x 108 x 51 190mm, ø70mm	150 x 108 x 51	213 x 200 x 70	284 x 220 x 70	284 x 254 x 78	344 x 254 x 78
Recommended Battery Capacity ≥	30Ah	60Ah	100Ah	160Ah	240Ah	400Ah
Minimum recommended battery capacity	15Ah	30Ah	50Ah	80Ah	120Ah	200Ah



L-II06214-MA

Industry Leading Technology for Off-Grid, Off-Shore and Backup Power Applications



info@xunzel.com  
www.xunzel.com